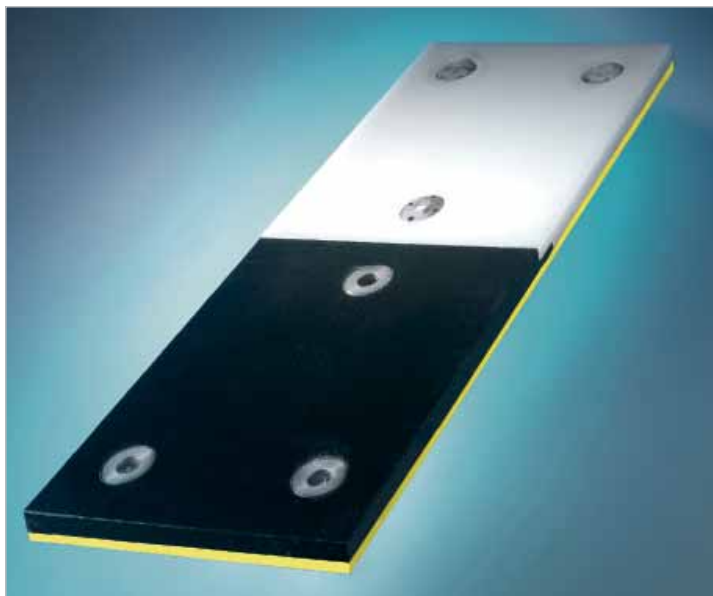


## Slide Promotion Linings ...

# Secure Fastening of KALEN Slide Promotion Plastics



KALEN materials offered by Kalenborn are highlighted by excellent resistance to corrosion, perfectly smooth surfaces and low weight.

### Laying and Installation

The installation of KALEN depends on the component to be protected and the

properties of the lining material chosen. In general, mechanical fastening has proven most effective.

Mechanical fastening can be realized by different types of screw unions, doweling methods as well as special weld bolts with special nuts.

### Overlapping or Welding

Kalenborn generally recommend overlapping installation. This method assures needed flexibility and enables compensation for thermal expansion.

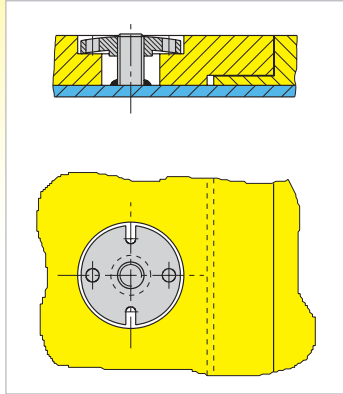
Special types of KALEN materials also allow welding to eliminate joints.

### Thermal Shaping

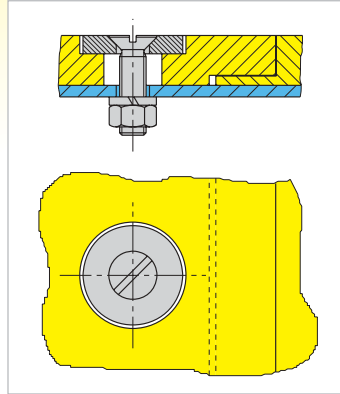
To allow best possible adaptation to the geometric shape of components, the KALEN can be shaped and tailored in a heating furnace. This enables precise lining of curved surfaces and recessed areas.

**Steel or Concrete Subsurface:**

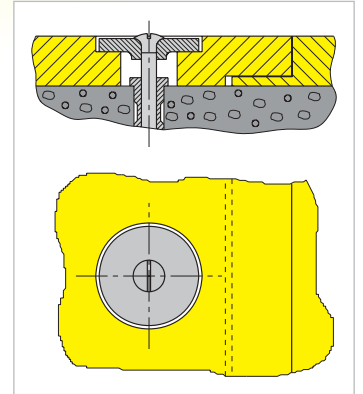
# The Optimal Fastening System for any Application



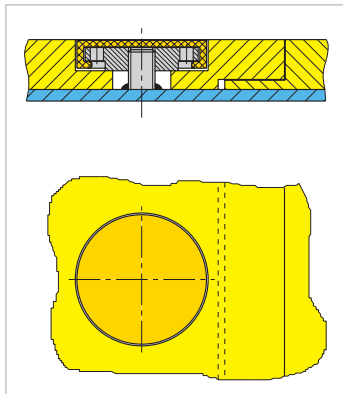
*Fastening to steel by means of weld studs with special self-locking two-hole nuts*



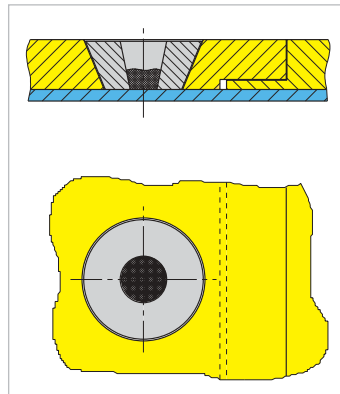
*Fastening to steel by means of countersunk bolts with nut and lock washer*



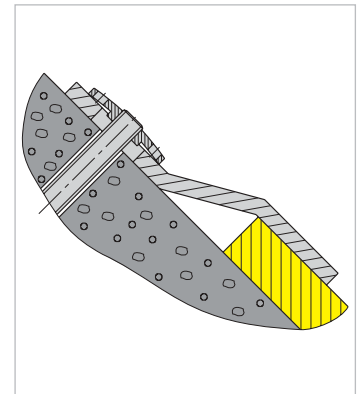
*Fastening to concrete by means of countersunk screws and impact anchors*



*The "closed" solution has all attachment points of the lining protected with KALEN plugs*



*Fastening to steel by conical ring fastened by welding*



*A Z-shaped ledge prevents conveyed material depositing behind the KALEN sheets*

**Kalenborn Kalprotect**

Tel. +49(0) 2645.18-0

Fax +49(0) 2645.18-112/180 (International)

[kalenborn@kalenborn.de](mailto:kalenborn@kalenborn.de)

[www.kalenborn.de](http://www.kalenborn.de)